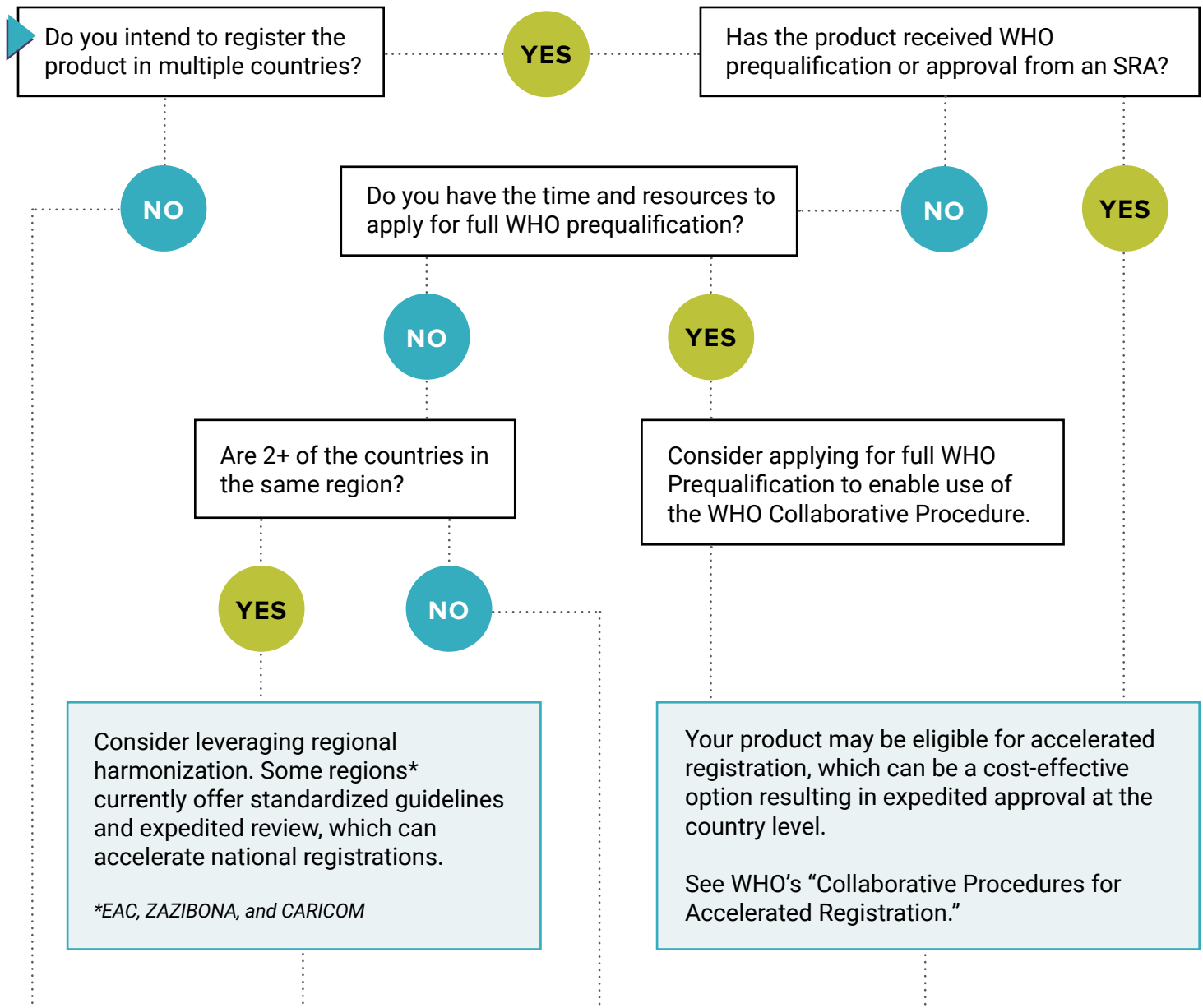




Regulatory Pathway Decision Tree

Instructions: Several potential regulatory pathways may be available to register your product. Use this decision tree to help identify which regulatory pathway would be most advantageous.



PURSUE NATIONAL-LEVEL REGISTRATION. The national registration process will be faster and simpler if the product has prior approval from a regional platform or WHO Collaborative Procedure.